

SHOWROOM
FOR LEASE!



DOWNTOWN HARRISPARK

1405 CAPITAL BLVD

RETAIL SHOWROOM FOR LEASE
IN RALEIGH, NC

BRIAN WALLACE

919.645.2773

brianwallace@yorkproperties.com

JOHN KERR

919.645.2766

johnkerr@yorkproperties.com



@yorkproperties1



PROPERTY DETAILS

1405 Capital Blvd

AVAILABILITY

± 11,444 SF | Available Now

LEASE RATE

\$18.00 SF

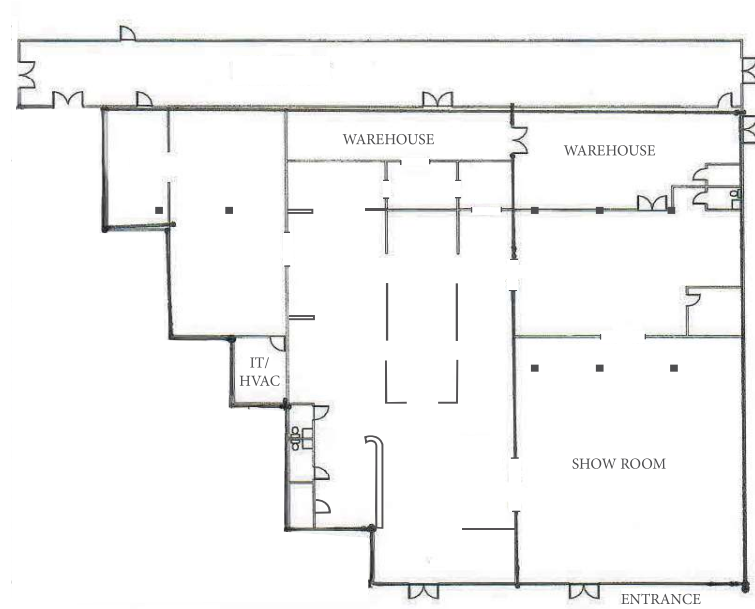
\$2.42 PSF | TICAM

DETAILS

- Large showroom space available for lease inside the beltline
- Former interior design/fabric store showroom
- Conditioned space with front door parking and building facing Capital Blvd
- Shared dock access
- 14'10" clear to bottom of joist
- 100% sprinkled
- Capital Blvd traffic count: 54,320 cars per day
- Neighboring tenants include Seven Saturday's Tap Room, Continental Golf and Clark Halls Doors and Windows

1405 CAPITAL BLVD

± 11,444 sf



york



PHO POWER
TRUST CENTER
RED HAT
SKY HOOR
400 H
THE DILLON

SEABOARD STATION

Seaboard Station is an engaging and active neighborhood that sits between the historic railroad station and William Peace University. Here you'll find vibrant shops and restaurants, apartments and a dynamic hotel.



SMOKY HOLLOW

A mixed-use, urban district revitalizing the northern gateway to downtown Raleigh. The project includes Class A office space, 700 urban apartments, Publix grocery store and an energetic pedestrian promenade.



VILLAGE DISTRICT

Cozy neighborhood restaurants, friendly shop owners, and a lush landscape. Village District is a convenient destination where you can get almost anything you need while finding fun things you want—a safe place where it's easy to feel at home.



1405 CAPITAL BLVD

CAPITAL BLVD

CAPITAL BLVD

RALEIGH ACCOLADES

#1 BEST-PERFORMING LARGE METRO AREA

Milken Institute · January 2025

#1 MOST LIVABLE CITY

Far & Wide · December 2024

#5 BEST CITY FOR JOB SEEKERS

Indeed · December 2023

#7 FASTEST GROWING CITIES IN THE US

U-Haul · January 2025

#1 BEST QUALITY OF LIFE ON THE US EAST COAST

Travel & Leisure · September 2024

#1 TOP SPOT TO LAUNCH A SMALL BUSINESS IN NC

Lending Tree · November 2023

RALEIGH PROFILE

53.9%

Bachelor's Degree or Higher

53%

Owner-Occupied Housing Unit Rate

217,866

Number of Housing Units

\$74,612

Median Household Income

194,917

Number of Households

2.3

Number of Persons Per Household

21.6 min.

Mean Time Travel to Work

20.6%

Moved since previous year

35

Median Age

\$340,000

Median Home Price

5.4%

Veteran Status

469,502

Total Population

MAJOR GROWTH ON THE HORIZON

APPLE UPDATES ON RTP CAMPUS - JUNE 2023

"Apple has revealed new site plans for the construction of its Research Triangle Park campus that could house more than 3,000 workers. The plans include six buildings with a total of more than 700,000 square-feet of office space and 3,000 parking spaces all on 41 acres."

<https://raltchwire.com/2023/06/30/apple-site-plans-large-new-office-space-rt-park/>

GOOGLE'S NEW ENGINEERING HUB - JANUARY 2022

Google sweetly welcomed employees into its new Google Cloud office in Durham for the first time on Tuesday – but with much less fanfare than the company hoped."

<https://raltchwire.com/2022/01/11/google-cloud-office-officially-durham-welcomes-employees-but-not-the-fanfare/>

AMAZON SIGNS NEW LEASES - MARCH 2022

"After opening its massive fulfillment center in Garner last year, Amazon (Nasdaq: AMZN) has signed the leases for two new delivery stations in the Triangle, one in Garner and the other in Raleigh."

The goal is to power Amazon's 'last-mile delivery capabilities,' said spokeswoman Ashley Lansdale. The e-commerce giant said the move will create hundreds of jobs, but didn't give an exact amount. Already, the company employs about 600 full-time associates at existing delivery stations in the Triangle. It opened new delivery stations in Cary and Durham last year."

<https://www.wireimage.com/news/google/news/2022/03/03/amazon-signs-new-leases-in-triangle-creates-hundreds-of-jobs/>

1405 CAPITAL BLVD DEMOGRAPHICS

MILE RADIUS	POPULATION	HOUSEHOLDS	HOUSEHOLD INCOME	DAYTIME POPULATION
1	12,941	6,315	\$138,153	8,281
3	102,851	47,597	\$104,942	107,448
5	254,146	113,075	\$91,993	183,860

1405 CAPITAL BLVD

RALEIGH, NC

LEASING

Brian Wallace | 919 645 2773
brianwallace@yorkproperties.com

John Kerr | 919 645 2766
johnkerr@yorkproperties.com

MARKETING

Gardenia Buendia
gardeniabuendia@yorkproperties.com

YORK PROPERTIES

Brokerage · Property Management · Security
Maintenance · Association Management · Construction
Landscaping · Accounting

ADDRESS

2108 Clark Avenue
Raleigh, NC 27605

ONLINE

@yorkproperties1
www.yorkproperties.com

